



Cable ID: LINHA LANDUTTI CATEGORIA 6 02

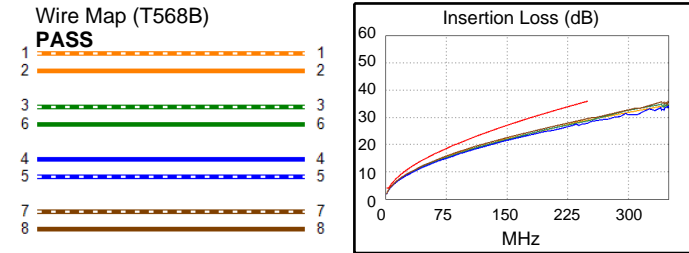
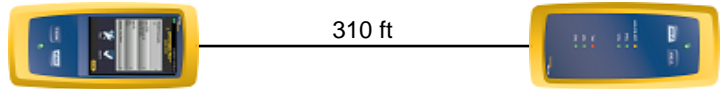
Test Limit: ISO11801 Channel Class E
Limits Version: V7.9
Date / Time: 10/22/2024 01:24:33 PM
Headroom 3.8 dB (NEXT 3,6-4,5)
Cable Type: Cat 6 U/UTP
NVP: 68.0%

Main: Versiv
S/N: 23380039
Software Version: V6.11 Build 2
Calibration Date: 05/16/2024
Adapter: DSX-602 (DSX-CHA004)
S/N: 23350225

Test Summary: PASS

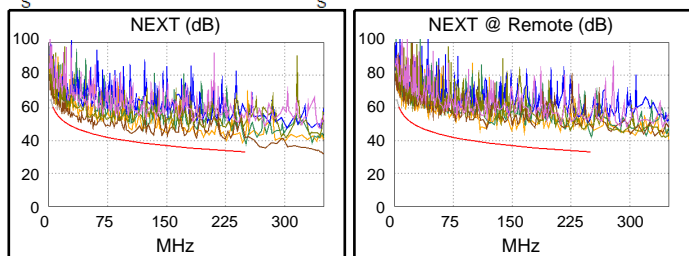
Remote: Versiv
S/N: 23380044
Software Version: V6.11 Build 2
Calibration Date: 05/16/2024
Adapter: DSX-602R (DSX-CHA004)
S/N: 23350224

| | | |
|--------------------------------|------------|-------|
| Length (ft), Limit 328 | [Pair 4,5] | 310 |
| Prop. Delay (ns), Limit 555 | [Pair 7,8] | 479 |
| Delay Skew (ns), Limit 50 | [Pair 7,8] | 16 |
| Resistance (ohms), Limit 25.00 | [Pair 7,8] | 17.70 |
| | | |
| Insertion Loss Margin (dB) | [Pair 7,8] | 6.3 |
| Frequency (MHz) | [Pair 7,8] | 250.0 |
| Limit (dB) | [Pair 7,8] | 35.9 |

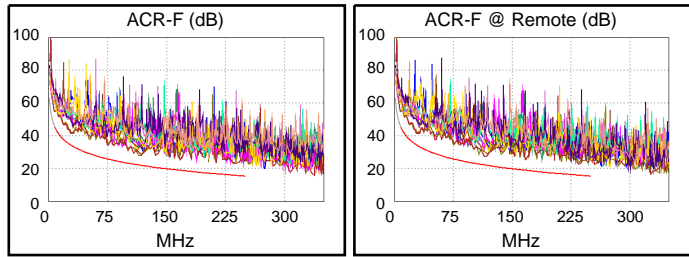


Worst Case Margin Worst Case Value

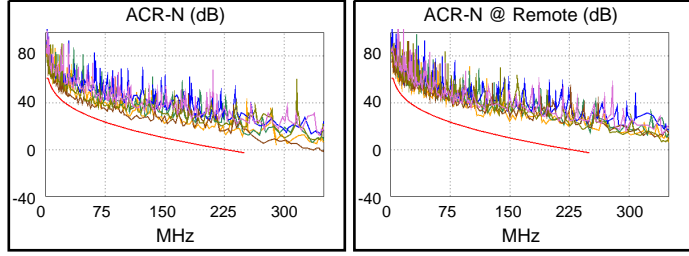
| PASS | MAIN | SR | MAIN | SR |
|---------------------|---------|---------|---------|---------|
| Worst Pair | 3,6-4,5 | 1,2-3,6 | 1,2-3,6 | 1,2-3,6 |
| NEXT (dB) | 3.8 | 6.0 | 5.5 | 9.3 |
| Freq. (MHz) | 17.0 | 14.1 | 247.0 | 165.5 |
| Limit (dB) | 52.8 | 54.1 | 33.2 | 36.2 |
| Worst Pair | 3,6 | 3,6 | 4,5 | 4,5 |
| PS NEXT (dB) | 5.4 | 7.7 | 6.8 | 13.1 |
| Freq. (MHz) | 107.5 | 13.9 | 250.0 | 250.0 |
| Limit (dB) | 36.5 | 51.6 | 30.2 | 30.2 |



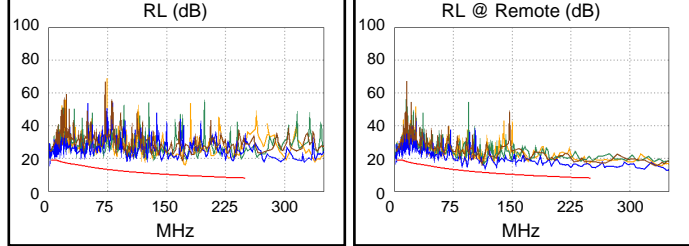
| PASS | MAIN | SR | MAIN | SR |
|----------------------|---------|---------|---------|---------|
| Worst Pair | 4,5-3,6 | 4,5-3,6 | 4,5-3,6 | 3,6-4,5 |
| ACR-F (dB) | 4.7 | 4.6 | 4.7 | 5.0 |
| Freq. (MHz) | 234.5 | 117.5 | 234.5 | 234.5 |
| Limit (dB) | 15.9 | 21.9 | 15.9 | 15.9 |
| Worst Pair | 3,6 | 4,5 | 3,6 | 4,5 |
| PS ACR-F (dB) | 7.4 | 7.0 | 7.8 | 7.0 |
| Freq. (MHz) | 234.5 | 248.0 | 248.0 | 248.0 |
| Limit (dB) | 12.9 | 12.4 | 12.4 | 12.4 |



| PASS | MAIN | SR | MAIN | SR |
|----------------------|---------|---------|---------|---------|
| Worst Pair | 3,6-4,5 | 1,2-3,6 | 1,2-3,6 | 3,6-7,8 |
| ACR-N (dB) | 5.3 | 7.3 | 12.7 | 19.2 |
| Freq. (MHz) | 16.9 | 14.1 | 247.0 | 242.0 |
| Limit (dB) | 44.3 | 46.3 | -2.5 | -1.9 |
| Worst Pair | 3,6 | 3,6 | 1,2 | 3,6 |
| PS ACR-N (dB) | 6.5 | 8.7 | 14.5 | 21.3 |
| Freq. (MHz) | 3.3 | 3.1 | 250.0 | 250.0 |
| Limit (dB) | 58.0 | 58.0 | -5.8 | -5.8 |



| PASS | MAIN | SR | MAIN | SR |
|----------------|------|-------|-------|-------|
| Worst Pair | 4,5 | 4,5 | 1,2 | 4,5 |
| RL (dB) | 2.8 | 2.2 | 6.1 | 2.2 |
| Freq. (MHz) | 5.1 | 116.0 | 173.0 | 116.0 |
| Limit (dB) | 19.0 | 11.4 | 9.6 | 11.4 |



Compliant Network Standards:
 10BASE-T 100BASE-TX 100BASE-T4
 1000BASE-T 2.5GBASE-T
 ATM-25 ATM-51 ATM-155
 100VG-AnyLan TR-4 TR-16 Active
 TR-16 Passive